

All electric lubrication systems for conveyors – no air required

- Solid shot lubricating designs available for a wide variety of moving points, chains and conveyors
- Reduce downtime due to premature conveyor wear
- Eliminates surging caused by non-lubricated conveyor components
- Available in kit form for general purpose use
- Low-cost installation
- Conveyor runs smoother, keeps product from swaying, reducing possibility of damage to product and injury on the line
- Delivers a wide viscosity range of lubricants
- Reduces drive-power requirements
- Integral 5-gallon reservoir
- No waste or contamination – a metered amount of lubricant is cleanly and precisely delivered to the wear points
- Independent operation or centralized fill
- Built-in power-on and low-lubricant-level status lights

Electric-Only Lubrication – reliable and efficient operation

The ChainMaster E-Series Lubrication Systems are all electric and designed to deliver metered amounts of lubricant in solid shot form to conveyor wear points. The lubricant shots are discharged from nozzles which are rigidly mounted close to the moving wear points.

The system consists of a reservoir/pump and controls assembly, and a sensing and delivery assembly. The reservoir/pump and controls assembly includes the integral lubricant reservoir, the electronic controls and the pump module. The sensing and delivery assembly includes one or more target sensors, nozzles and tubing for lubricant delivery and all bracketry.*

*Units supplied in kit form include proximity switch and nozzle brackets only.



Reservoir/Pump And Controls Assembly

Standard Components – the heart of the E-Series

- Adjustable volume/velocity positive displacement piston pump(s)
- Integral 5-gallon lubricant reservoir
- Power-on and low-lubricant-level status lights
- Low-lubricant-level isolated contacts and automatic shut-off circuit
- ChainMaster lubricator controller-keypad-programmable, digital-readout, multi-function counter*

*Optional on general purpose kit systems

Optional Equipment – increase ease of operation

- Remove-fill control valve
- 5, 16, or 55-gallon remote-fill pump*
- Drip pans and mounting brackets

*Remote-fill pumps may be used as centralized supply pumps to multiple E-Series lubrication systems

Control Options

- Programmable 1000-hour timer with cycle progress display
- 12-hour manual-on, automatic-off timer
- Manual on/off switch*
- Electric on/off design for PC interface

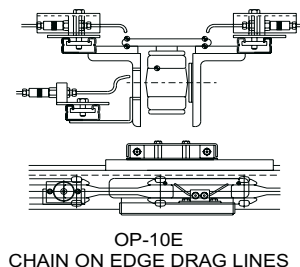
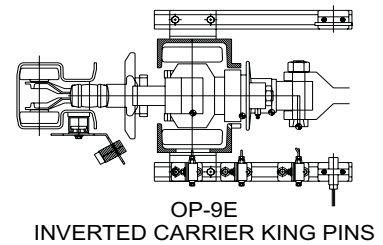
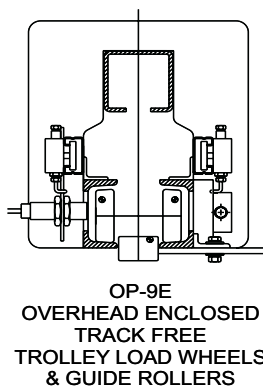
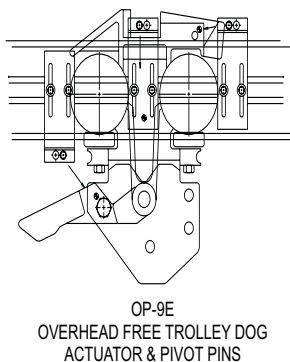
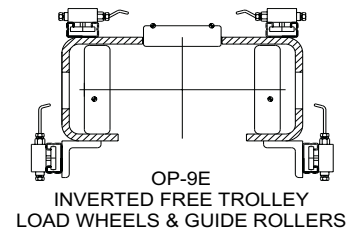
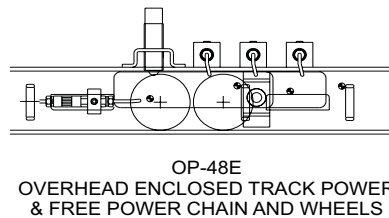
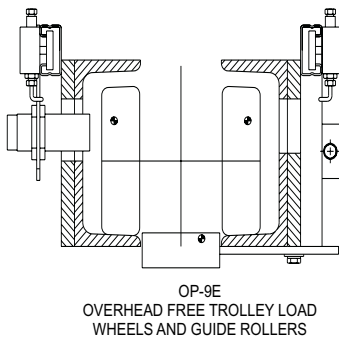
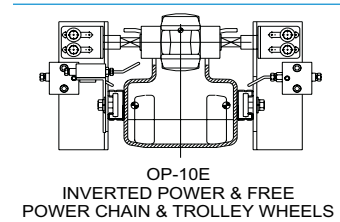
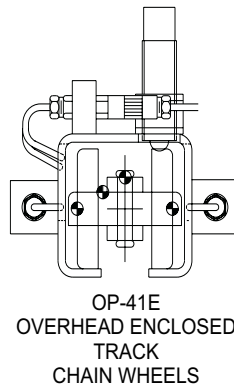
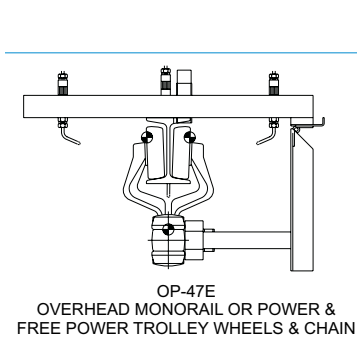
*Standard on general purpose kit systems.

SPECIFICATIONS*	
Lubricant	22 – 220 cST@40°C (not to exceed 250 cST @ operating temperature), lubricants with solids must be colloidal < 5 microns viscosity improvers and stick-slip additives degrade "shot" performance and must be approved by OPCO prior to use
Shot Volume	0.0011 to 0.0045 in ³ (0.018 to 0.74 cm ³) per outlet line
Lubricant Lines	4 mm nylon or copper
Lubricant Lines Length	8 ft (2.5 meters) maximum
Reservoir Capacity	5 gal (18.9 liter)

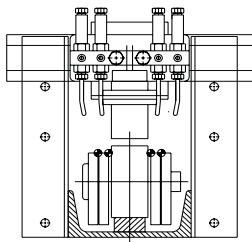
Ambient Temperature	40°F to 110°F (5°C to 44°C)
Input Power	115 VAC 50/60Hz, standard 1.5 amp; 220 VAC, 50/60Hz, optional 0.8 amp
Material Compatibility	Non-metallic parts exposed to lubricant Buna-N, nylon, delrin and epoxy; Non-metallic parts exposed to ambient air temperature Lexan, neoprene, nylon, SBR and thermoplastic

*Specifications shown are for standard units. Custom designed units for your special applications are available. Consult your OPCO Representative.

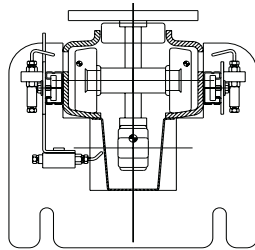
ChainMaster® E-Series Lubricators Engineered For Your Application



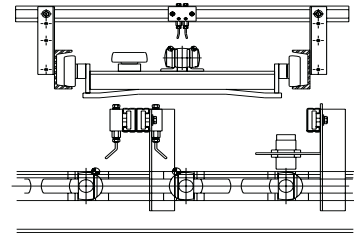
ChainMaster® E-Series Lubricators Engineered For Your Application Cont'd



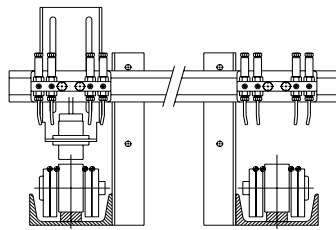
OP-40E
SINGLE STRAND CC5 CHAIN



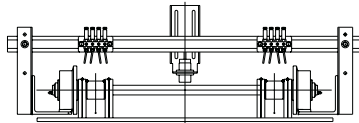
OP-40E
TOWVEYOR CHAIN
AND TROLLEY WHEELS



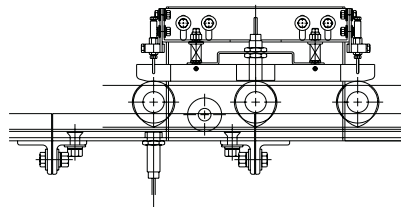
OP-40E
SLAT CONVEYOR CHAIN



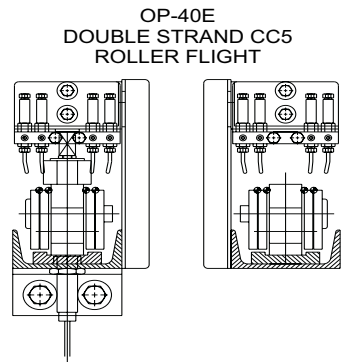
OP-40E
DOUBLE STRAND CC5 CHAIN



OP-40E
FLAT TOP CHAIN &
DRIVE BUSHINGS



OP-40E
SINGLE STRAND CC5 ROLLER FLIGHT



OP-40E
DOUBLE STRAND CC5
ROLLER FLIGHT

WIDE VARIETY – UNITS AVAILABLE FOR ALL STANDARD APPLICATIONS			
Standard Applications	Oiler Model	Standard Applications	Oiler Model
Overhead Conveyors		Floor Conveyors	
Monorail or Power & Free Chain	OP-47E	Chain on Edge Drag Lines	OP-10E
Monorail or Power & Free Power Trolley Wheels	OP-47E	Chain on Flat	OP-40E
Free Trolley Load Wheels	OP-9E	Single Strand CC5 Chain	OP-40E
Free Trolley Guide Rollers	OP-9E	Double Strand CC5 Chain	OP-40E
Free Trolley Dog Actuator & Pivot Pins	OP-9E	Single Strand CC5 Roller Flight	OP-40E
Enclosed Track Chain and Wheels	OP-41E	Double Strand CC5 Roller Flight	OP-40E
Enclosed Track Power & Free Power Chain and Wheels	OP-48E	Inboard Roller Chains	OP-40E
Enclosed Track Free Trolleys	OP-9E	Towveyor Chain	OP-40E
Cable Conveyor Trolleys	OP-47E	Towveyor Trolley Wheels	OP-40E
Cable Conveyor Cable Joints	OP-47E	Pedestal Conveyor Chains	OP-40E
Inverted Conveyors		Pedestal Conveyor Wheels	OP-40E
Power & Free Power Chain	OP-10E	Flat Top Chain & Drive Bushings	OP-40E
Power & Free Power Trolley Load Wheels	OP-10E	Slat Conveyor Chain & Drive Bushings	OP-40E
Free Trolley Load Wheels	OP-9E		
Free Trolley Guide Rollers	OP-9E		
Carrier King Pins	OP-9E		
Enclosed Track Power & Free Power Chain and Wheels	OP-48E		
Enclosed Track Free Trolleys	OP-9E		

Accurate Sensing and Delivery – no wasted lubricant

Accurate sensing and lubricant delivery is an important factor in maintaining trouble-free operation and extending the life of your conveyor equipment. All E-Series systems are specially designed to match the sensing and delivery needs of your conveyors.

The Precision Arm Sensing and Delivery System accurately lubricates at varying chain speeds and mounts directly to I-beams to avoid track modifications.

The Ski Bar Stationary Nozzle Sensing and Delivery System avoids direct contact with the chain and offers a switch-face-protected proximity switch for accurate lubricant delivery.

